

Airknife Configuration

(Airknife 구조 위치도)

Material Stainless Steel(SS)

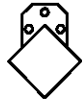
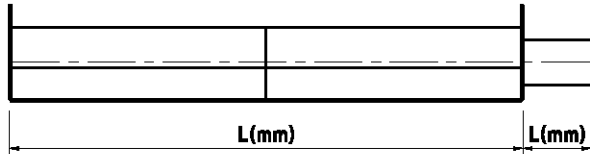
Inlet OD:

Default Gap:0.030"

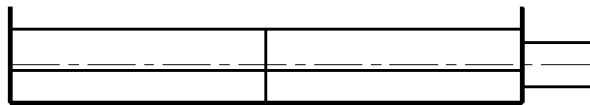
- 1" 1½" 2" 2½"
 3" 4"

(Gap can be adjusted from 0.020"~0.125")

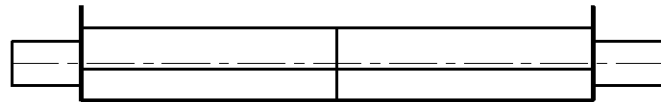
- Std Inlet (1구)
 (기본 출입구)



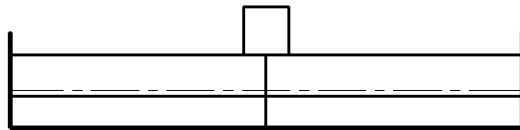
- Std Ext Inlet (1구)
 (기본 & 통출입구)



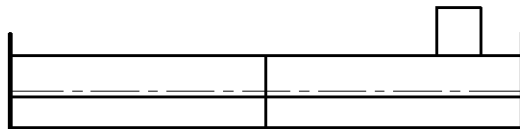
- Both (Two) Inlet (2구)
 (양면 출입구)



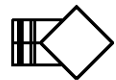
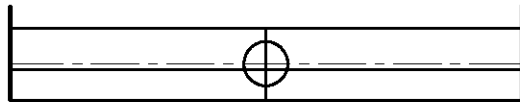
- Top Mid Inlet (1,2,3구)
 (상부 중앙 출입구)



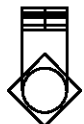
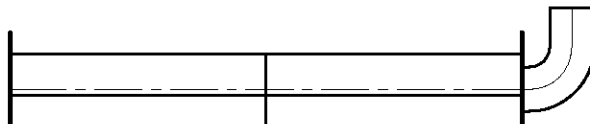
- Top Side Inlet (1구)
 (상부 측면 출입구)



- Side Mid Inlet (1,2,3구)
 (사이드 중앙 출입구)



- Elbow Inlet (1,2구)
 (엘보 출입구)



P/N :
Sales Order # :
Customer Signature :
Company. Tel :

Description :
Work Order # :
Date :
Web : www.airknife.co.kr